

FIG. 1. Total cross sections of $p(e, e')X$ at $Q^2 = 0.3(\text{GeV}/c)^2$.

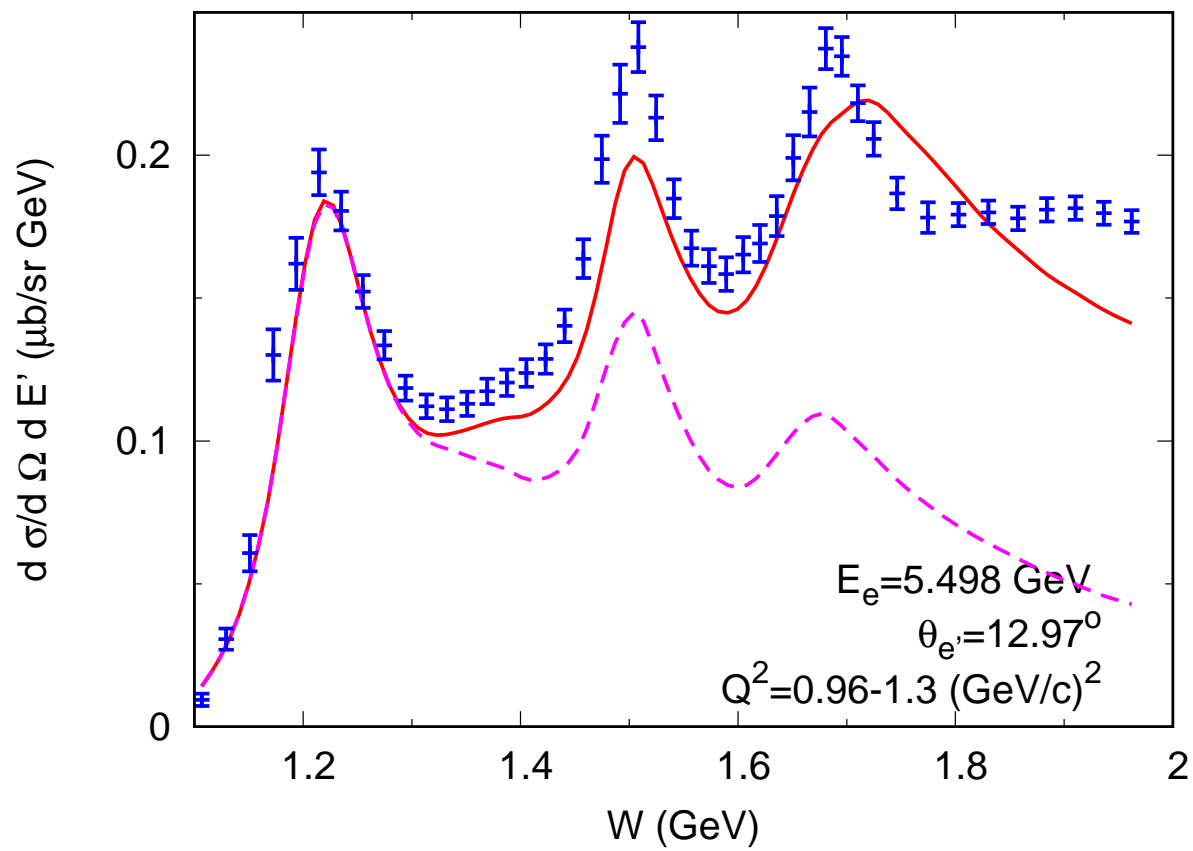


FIG. 2. Total cross sections of $p(e, e')X$ at $Q^2 = 1.0(\text{GeV}/c)^2$.

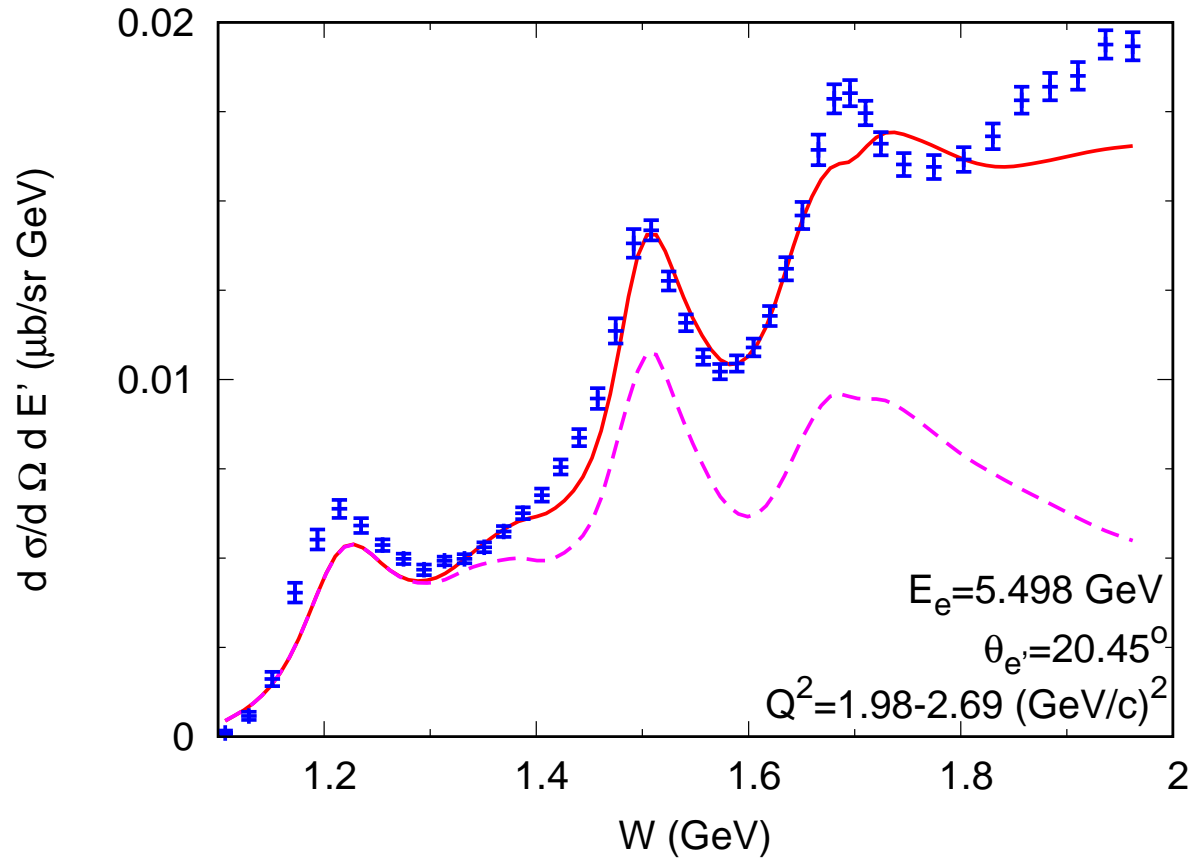


FIG. 3. Total cross sections of $p(e, e')X$ at $Q^2 = 2.5(\text{GeV}/c)^2$.