

A HIGH GRADIENT SUPERCONDUCTING QUADRUPOLE FOR A LOW CHARGE STATE ION LINAC

J.W. Kim, K.W. Shepard, and J.A. Nolen, Argonne National Laboratory, Argonne, IL 60439 USA

A superconducting quadrupole magnet has been designed for use as the focusing element in a low charge state linac proposed at Argonne. The expected field gradient is 350 T/m at an operating current of 53 A, and the bore diameter is 3 cm. The use of rare earth material holmium for pole tips provides about 10 % more gradient than iron pole tips. The design and the status of construction of a prototype singlet magnet is described.

I. INTRODUCTION

A radioactive ion beam facility proposed at ANL [1] [2] requires accelerating ions with $q/m \geq 1/66$ and $\beta (=v/c) \geq 0.004$ through a superconducting drift tube linac. In the present ATLAS linac, the transverse focusing elements are 8 tesla superconducting solenoids, which are used for beams with a $q/m \geq 1/10$ and $\beta \geq 0.008$ [3]. However, the low charge state beams contemplated here require much stronger focusing; magnetic solenoid elements would need to produce axial fields higher than 15 tesla for adequate transverse focusing. More effective focusing can be obtained with either magnetic or electric quadrupoles. We ruled out electrostatic quadrupoles because of uncertainty both in holding the required voltage and in operation at 4 K. Considering magnetic elements, permanent magnet quadrupoles have been used for drift-tube linacs, but in the present application would need complete shielding to avoid trapped flux and excessive rf loss in the neighboring superconducting cavities. Also, permanent magnet quadrupoles would not provide an adequate gradient for the required aperture.

A series of beam optics calculations has shown that quadrupole triplets with a gradient of 350 T/m, a bore radius of 3 cm, and an overall length of approximately 20 cm can provide adequate transverse focusing. The design is simplified by the fact that harmonic components in quadrupole field are not so detrimental to beam quality in the present application as in recirculating machines. Beam dynamics calculations indicate that non-quadrupole harmonics with an integrated effect up to 1 % at a radius of 1 cm are tolerable. The design of a prototype magnet which can meet these requirements is discussed below.

II. DESIGN OF A PROTOTYPE QUADRUPOLE

Design options for superconducting quadrupoles include $\cos 2\theta$ or superferric types. Construction methods for forming $\cos 2\theta$ coils with NbTi wires have been established, but such high field quality (and high construction cost) is not needed in this linac application. Also, it is desirable to use a small size of wire to reduce the refrigeration budget, which would make a $\cos 2\theta$ winding even more difficult. For these reasons, we have chosen a magnet design based on simple racetrack coils with pole tips.

A schematic view of the prototype is shown in Fig.1. The configuration of the prototype is similar to a superconducting quadrupole developed at LANL [4], but with a modified winding

to accommodate a substantially increased bore radius. Each of the four coils is composed of three blocks to increase the coil size and to keep the coil configuration simple. In fact, coil currents could be more effectively used if the coil were expanded closer to the field region, maintaining a $\cos 2\theta$ current distribution (e.g. ref.[5]), but then the coil winding becomes more difficult and expensive.

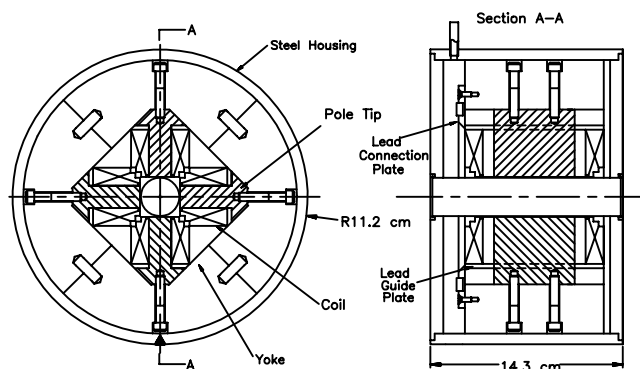


Figure 1. A schematic view of a prototype quadrupole

The pole tips are made of rare earth material holmium to enhance the magnetic flux concentration. This technique has been utilized for high field solenoids [6] as well as for the LANL prototype quad; the saturation magnetization of holmium at 4.2 K is 3.8 tesla. The pole tip has a simple flat face since it is saturated at the operating field. Flat pole tips have been employed for room temperature quadrupoles in drift tube linacs [7]. The prototype is a quadrupole singlet with a length equal to the longest element of the proposed triplet, since the longer quadrupole magnet could be more subject to wire motion problems. The inner corner of the section of the coil near the pole face has a small notch (1.3×2 mm) removed to reduce the peak field on the conductor.

The magnetic fields were numerically calculated first using the OPERA-2d code [8] to optimize the pole tip width and minimize the higher order harmonics. This was a compromise process, trading-off useful aperture against low harmonic content. At 350 T/m, the 12th pole is about 0.1 % of quadrupole field, and the 20th pole is less than 0.1 %. In Fig.2, the field lines are plotted for a quadrant of the quadrupole. The B-H curve of holmium used in the numerical calculation was taken from ref.[6]. At 350 T/m the gradient gain from using holmium is about 35 T/m higher than for iron pole tips. Major design parameters of the prototype are listed in Table.1.

Since the prototype quadrupole length is short, 3-d effects are important to field quality. A 3-d finite element program TOSCA [8] was used to calculate fringe fields. The field profile of a

Table 1: Design parameters of a prototype quadrupole

Gradient	350 T/m
Operating current	53 A at 350 T/m
Current density in coil	47,000 A/cm ²
Pole tips	holmium (99.6 %)
Inductance	0.55 H
No of turns	3800
Yoke	SAE 1008 steel
Wire	NbTi
Diameter	0.305 mm
Cu/Sc	1.35
Critical current	57 A at 6.3 tesla, 4.2 K
Insulation	Formvar, 0.0127 mm thick

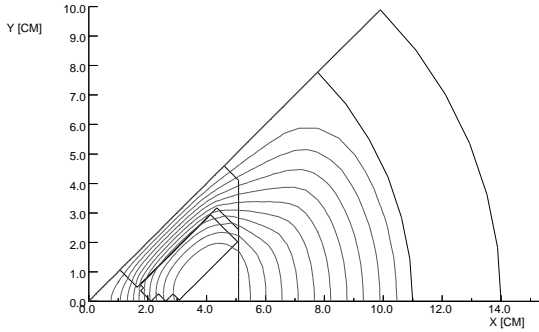


Figure 2. Magnetic field lines for a quadrant of the quadrupole, as calculated with the OPERA-2d code

transverse field component (B_t) is plotted in Fig.3 at a radius of 1 cm and 350 T/m. The effective magnetic length is 7.6 cm.

The effect of harmonic field components on the beam is determined by the integrated gradient along the quadrupole. The integrated gradient error defined in the equation below is used to specify the field quality;

$$\Delta I_G(r, z) = \frac{\int_0^z B_t(r, \theta_{max}) dz - \int_0^z B_t(r, \theta_{min}) dz}{\int_0^z B_t(r, \theta_{min}) dz}, \quad (1)$$

where θ_{max} is an angle which gives a maximum of the integral, and θ_{min} for a minimum at a radius of r . The dashed line in Fig.3 shows $\Delta I_G(r, z)$ as a function of z at $r=1$ cm. Note that the integrated error is reduced as the beam traverses the coil ends: this effect has been used to design high quality $\cos 2\theta$ quadrupoles. The integrated harmonic content increases for lower fields; it rises to 0.6 % at 200 T/m, and further to 2.5 % at 100 T/m when the current density is 6400 A/cm².

The coil end design has two important issues: 1) harmonic errors, 2) enhancement of field on the conductor. To reduce both effects, the coil ends could be spread out using spacers [9]. However, such control of the end effect was not necessary for the present application. The harmonic error is reduced as the beam passes through the quadrupole as shown in Fig.3, although some field enhancement is unavoidable. The highest field on conductor is about 6.3 T at the ends compared to 6.0 T in the straight section, as calculated with TOSCA.

The coil is an orderly winding, with insulation sheets embedded between layers and impregnated with epoxy. The winding

is placed directly on the holmium pole, eliminating several steps needed when a winding form is used. The winding load is about 8 N, producing a winding tension of 9×10^3 N/cm². The coil is continuously wound without splice, and G-10 spacers are used to fill the rectangular gaps during winding.

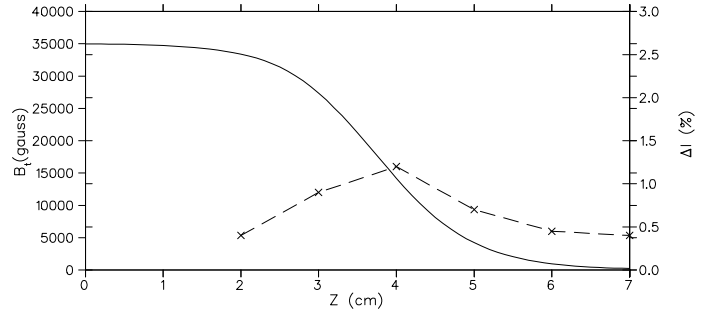


Figure 3. The field profile of B_t at $r=1$ cm (solid line) and the integrated gradient error (dashed line) are shown as a function of axial distance. The axial distance is from the center of the quadrupole.

III. COIL FORCE AND QUENCH CALCULATIONS

The electromagnetic forces on the straight section of the coil are depicted in Fig.3 for an excitation of 350 T/m. Although the winding tension prevents wire motion on the curved coil ends and although the coil is rather short, the straight section still needs a support. Without support the coil may expand as much as 0.3 mm at 350 T/m in the middle of the straight section, as calculated using the deflection formula for the case of supported edges in ref. [10]. The straight section is simply supported by stainless steel spacers. To avoid motion of lead wires from the coils, the leads are fixed onto the lead connection plates made of G-10, as noted in Fig.1.

An estimate of quench voltage at the junction between quenched and normal coils is about 400 volts as calculated with the program QUENCH [11]. Although such a voltage is not difficult to insulate, when 2 or 3 singlets of a given triplet are wired in series quench voltages of 1 kV or more can appear. For triplet elements, a compromise between quench voltage and the number of connecting leads into cryostat will need to be made.

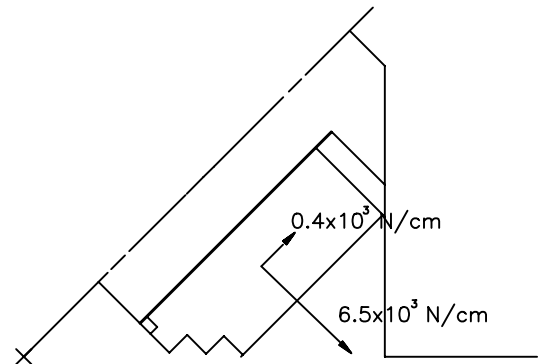


Figure 4. Forces on the straight section of the coil at 350 T/m

IV. STATUS AND CONCLUSIONS

A prototype superconducting quadrupole with a 3 cm aperture has been designed for use in a low charge state injector linac for ATLAS. The design field gradient of 350 T/m can be achieved when the operating current is 91 % of the critical current at 4.2 K. This tight design margin demands a high quality winding. 3-d field calculations showed that the integrated field gradient error is 0.45 % at 350 T/m and less than 1 % in a wide range of coil excitations.

Construction of a prototype singlet is well advanced. The winding is being carried out by Cryomagnetics Inc. The winding and testing of the first coil is expected to be completed in May 1995. Following testing of the first coil, the remaining 3 coils for the prototype singlet will be wound. Final assembly and field measurements will be carried out at Argonne. The prototype is designed to allow testing different coil supporting structures with little modification. The final design will be optimized for economic production of several dozen units.

Acknowledgment

We would like to thank Drs. L. Turner and K. Thompson of the Advanced Photon Source at Argonne National Laboratory for their generous help in using TOSCA, and Dr. A. Zeller at Michigan State University for providing the B-H data.

References

- [1] J.A. Nolen, Accelerator Complex for a Radioactive Ion Beam Facility at ATLAS, in the proceedings of this conference
- [2] K.W. Shepard and J.W. Kim, A Low-Charge-State Injector Linac for ATLAS, in the proceedings of this conference
- [3] A.H. Jaffey et al., *Nucl Instr Meth*, 121 (1974) 413
- [4] D.B. Barlow et al., *Nucl Instr Meth*, A313 (1992) 311
- [5] G. Ambrosio, et al., *Proceedings of 1994 European Particle Accelerator Conference*, (1994) 2268
- [6] W. Schauer and F. Arendt, *Cryogenics*, 23 (1983) 562
- [7] I.M. Kapchinskiy, *Theory of Resonance Linear Accelerators*, 81 (1985) Harwood Academic Publishers
- [8] OPERA-2d and TOSCA are products of Vector Fields, Oxford, England
- [9] S. Caspi, M. Helm, and L.J. Laslett, Magnetic Field in the End Region of the SSC Quadrupole Magnet, LBL-29819, (1991)
- [10] R.D. Cook and W.C. Young, *Advanced Mechanics of Materials*, Macmillan Publishing Co. (1985)
- [11] M.N. Wilson, program QUENCH, Rutherford Laboratory Report, RHEL/M151 (1968)